

BT670A COMBI WELDER

AN EXPERT WELDER

Available to process all common battery sizes in flooded or AGM designs. Up to three batteries a minute production capacity with several smart features and unique automation techniques.



FAST
DELIVERY



EXPERT
SOURCES



PREMIUM
SERVICES

LOOK BEYOND
RUDIMENTAL
EXCEL IN
ASSEMBLY

Flexible, durable and cost efficient products brought you with remarkable performances. Brilliant designs and precision crafting in machining culminate in expertly fabricated machineries.

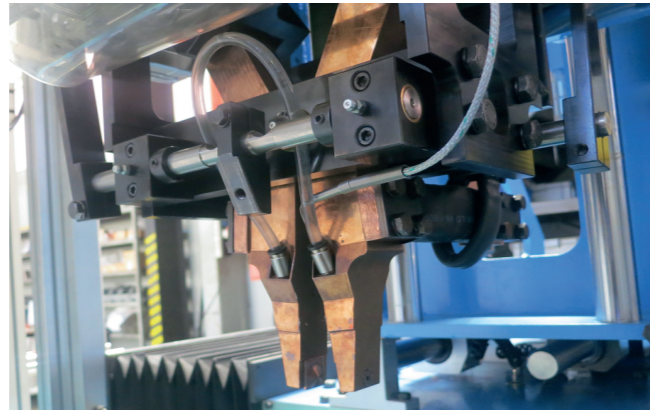
COMBI WELDER

BT670A is an efficient squeeze welding machine with an enhanced capability, flexible processing and durability. The machine has simple and unique changeover features ensuring reliable operation throughout service life.

The machine is supplied with distinctively comprehensive documentation in english both in soft and hard copy.

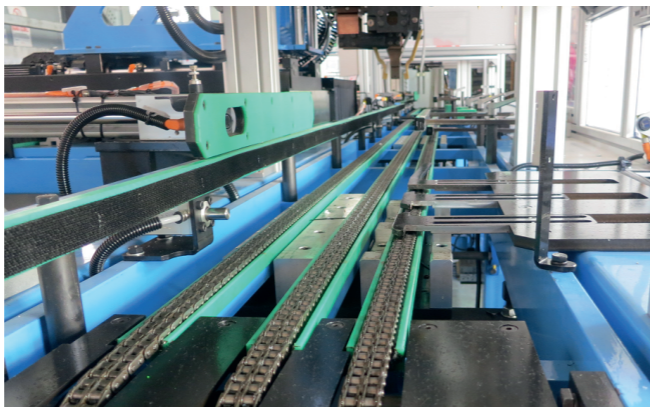
BT670A

01



Proven weld jaw design with mechanical squeeze stopper. High conductive berilium alloy jaw with water cooling & temperature control. High factored welding transformer with water cooling.

02



Three axis servo driven weld head with pneumatic compensator for Z axis drive. Chain driven conveyor with battery lifting unit at the welding station. Quick and easy setup battery fixing mechanism. Machine is available to process wide range of 1x6 and 2x3 cell batteries available in the market.

03

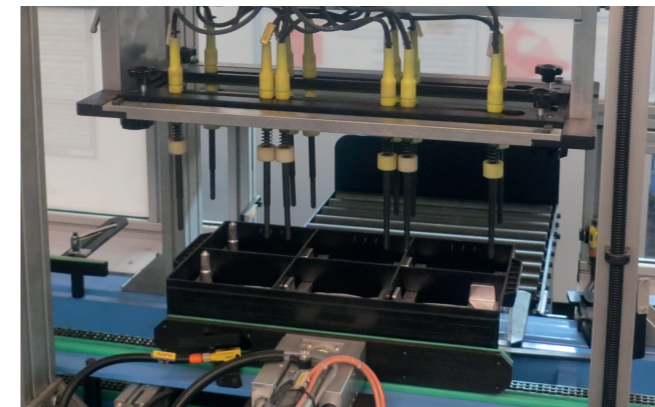
Automatic lubrication for servo drive guides and flow control for water cooling line. Compressed air compensator and individual pressure control for welding cylinder. AC welding controller from TECNA with water cooled thyristor.

04



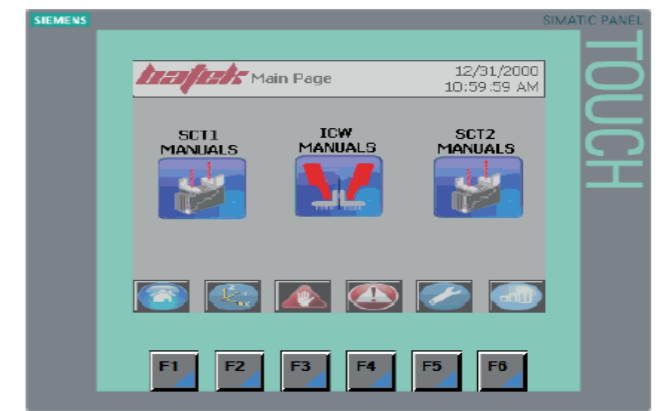
Powder coated heavy duty frame with safety devices. Reject station and rejected battery collect conveyor. Aquistic and visual alarm. Operator panel with HMI comprising setup functions and manual buttons.

05



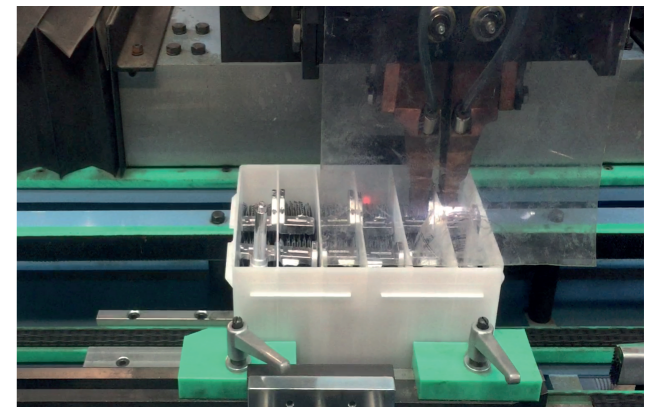
Incorporated with short circuit testing station. Built-in probe good contact control system and high voltage testing with Slaughte tester. Fast and easy changeover features. Automatic polarity alternation for changeover. Built-in reverse polarity check function availability. Rejected cell identification by HMI. Adjustable testing timer and networkable testing device.

06



HMI for user friendly operation. Manual buttons, basic production figures, recipe building, alarm & diagnostic are provided at HMI.

07



AVAILABLE OPTIONS

- * Line entry strap cooling conveyor
- * DC Welding System
- * Strap temperature control
- * Flag alignment system
- * Networkable welding controller
- * Weld quality check station
- * Secondary short circuit station
- * Chiller
- * Spare part set

TECHNICAL DATA

Electric: 220/380V - 3P -50Hz (or as required)
 Power: 46KvA
 Compressed Air: 7 cbm/h @ 6Bar
 Water: 20 L/min - 4Bar - 20°C
 Operator: None permanent
 PLC: Siemens S7
 HMI: Siemens
 Pneumatics: Festo / SMC
 AC Motors: SEW Eurodrive
 Servomotors: SEW Eurodrive
 Control Voltage: 24V DC

Transformer: 36 Kva
 Welding Controller: Tecna 550
 Battery Sizes: JIS (B19-H6) DIN (L0-C)
 Max. Weld Depth: 60mm
 Max. Hole Size: 16mm (Round) - 22x12mm (Oval)
 Jaw Squeeze: Pneumatic
 Max. Capacity: 3 batteries/min.
 Networking: Available
 Remote Access: Available
 Standard Weight: 2200 Kgs
 Crate Dimensions: 1800Wx3200Lx2200H cm