

BT70A-D

POST BURNER



SUPERIOR POST WELDING QUALITY

Servo driven weld heads to ensure numerically guaranteed post finishing. Probe temperature controlled tips for enhancing process precision. Capability of manufacturing up to 5 batteries a minute.

UPGRADE YOUR

VISION

STAY WITH THE LATEST

Explore prodigious opportunities unveiled and grab the chance to attune your capabilities to the ultimate battery assembly technology.



FAST
DELIVERY



EXPERT
CRAFTING



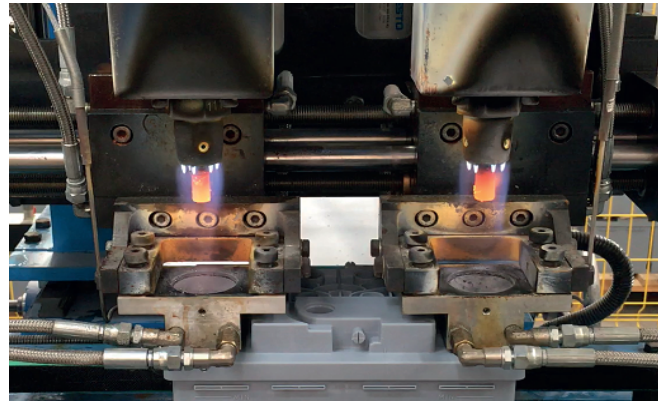
PREMIUM
SERVICES

BT70A-D

POST BURNER

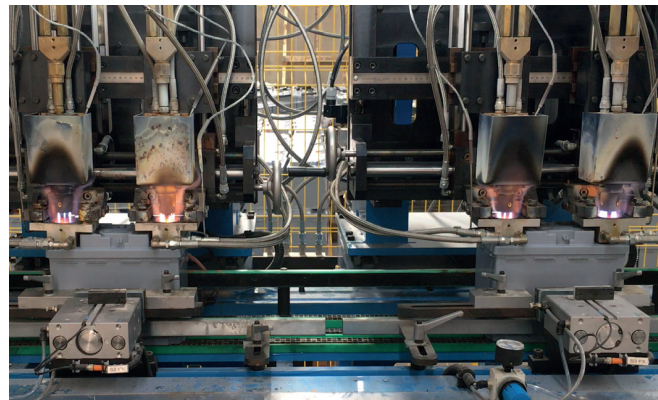
BT70A-D is a twin head post burning machine operating in weld tip design for batteries at 1x6 cell configuration. Each head can also be individually operated with its own parameters. The machine can be supplied standalone or part of complete assembly line.

01



Weld tip design for providing enhanced post welding quality. Temperature and cooling flow control for each welding mould. Unique weld tip temperature control for precision processing.

02



Twin station design where each head is independently operating with its own particular parameters. Servo driven heads for numerically ensured welding thickness. Weld tip penetration with deceleration for top quality post finishing. The machine can process 1x6 cell batteries with standard post design at a speed up to 5 batteries a minute.

03



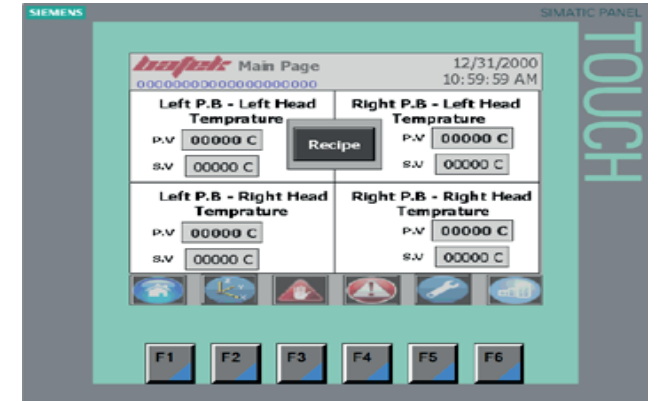
Automatic pressure control for gas and oxygen supply. Flow adjustment for main and pilot burning. Fuel efficient burner with quick and easy tip changeover design. Flashback arrestor for oxygen and gas supply.

04



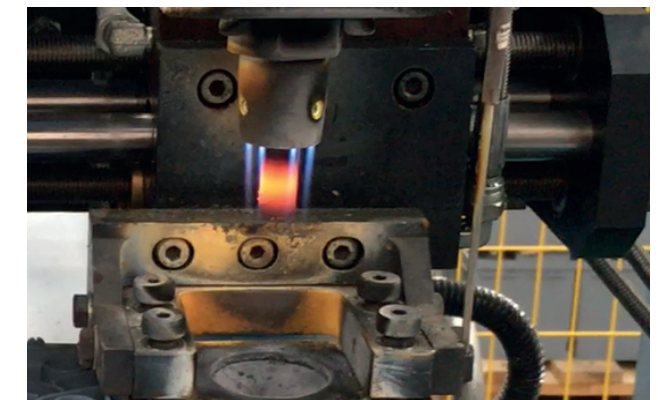
Welding thickness can be achieved up to 10mm. High bonding quality thanks to precision temperature, tip speed and timer controls. Quick and easy battery type changeover. Additional cooling for welding head guides. Tempered glass protection for front doors.

05



HMI for user friendly operation. Settings, manual buttons, basic production figures, recipe building, alarm & diagnostic are provided at HMI.

06



AVAILABLE OPTIONS

- * Battery infeed conveyor
- * Post height check integration
- * Push button changeover
- * Mitsubishi PLC & HMI
- * Spare part set

TECHNICAL DATA

Electric: 220/380V - 3P -50Hz (or as required)
Power: 4 KvA
Compressed Air: 2 cbm/h @ 6Bar (87 psi)
Water: 30 L/min - 4Bar (58 psi) - 20°C
Operator: None permanent
PLC: Siemens S7
HMI: Siemens
Pneumatics: Festo / SMC
AC Motors: SEW Eurodrive
Servomotors: SEW Eurodrive
Control Voltage: 24V DC

Gas Type: Propane or Natural Gas
Gas Supply Pressure: ≥ 500 mBar - (7,5 psi)
Oxygen Supply Pressure: ≥ 5 Bar - (72,5 psi)
Battery Sizes: JIS (B20-E41) DIN (L0-L5)
Temperature Control: PLC based analogue card
Max. Capacity: 5 batteries/min.
Networking: Available
Remote Access: Available
Standard Weight: 1900 Kgs
Crate Dimensions: 180Wx320Lx220H cm