

# BT80A-D

## LEAK TESTER



### FAST AND RELIABLE

Available for wide range 1x6 cell battery processing up to 5 batteries a minute. Unique changeover features with smart designs and automation.



FAST  
DELIVERY



EXPERT  
CRAFTING



PREMIUM  
SERVICES

UPGRADE YOUR

# VISION

# STAY WITH THE LATEST

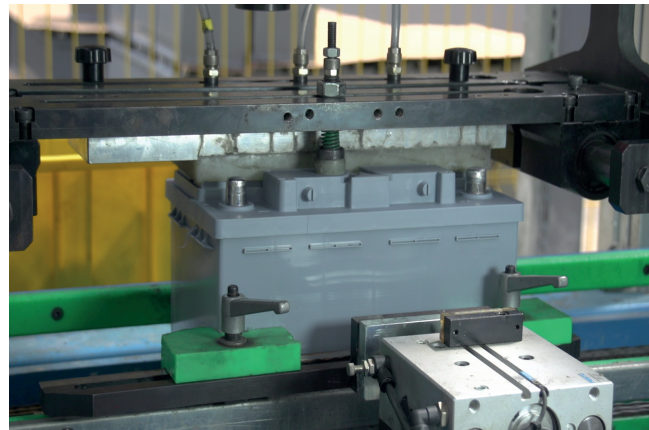
Explore prodigious opportunities unveiled and grab the chance to attune your capabilities to the ultimate battery assembly technology.

# BT80A-D

## LEAK TESTER

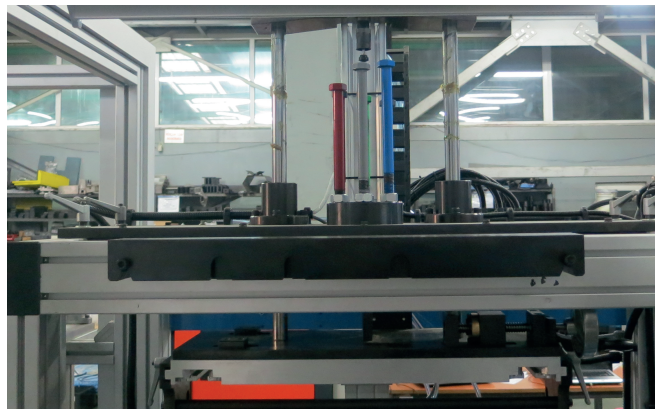
BT80A-D is a twin head leak testing machine capable to process 1x6 cell batteries. Batteries tested in two step sequentially in through both test heads. User friendly and reliable machine can process up to five batteries a minute.

01



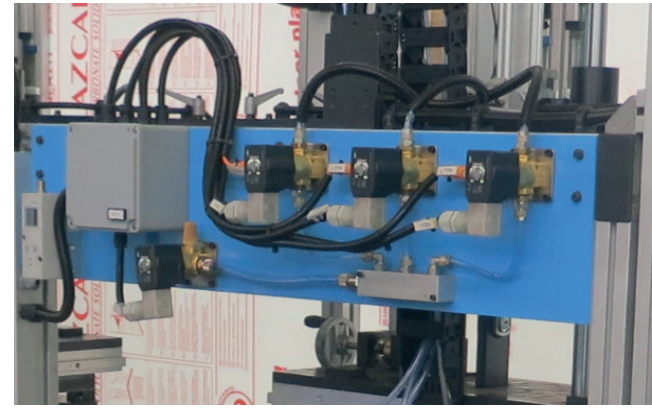
Double testing head design in which each head implement leak testing of 1-3-5 and 2-4-6 cells. All types of lids in automotive battery sizes can be processed with precision at a speed up to five batteries a minute.

02



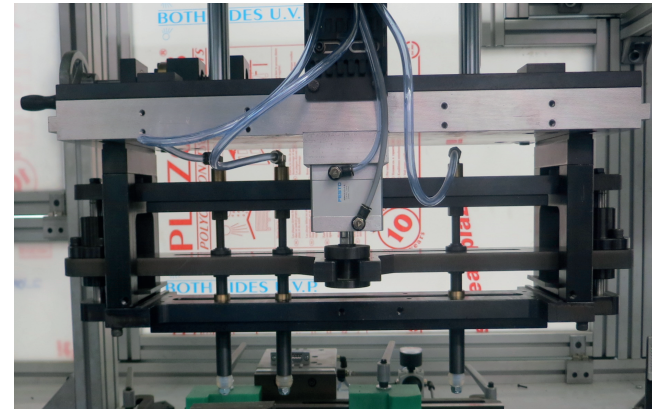
Easy and quick height setting through dedicated stoppers and quick changeover templates for each lid type provided. Additionally fine tuning setting is provided to compensate variations in lid models. Typical change-over time is less than five minutes for complete machine. Battery lifting system raises batteries off the conveyor to ensure scratch free batteries.

03



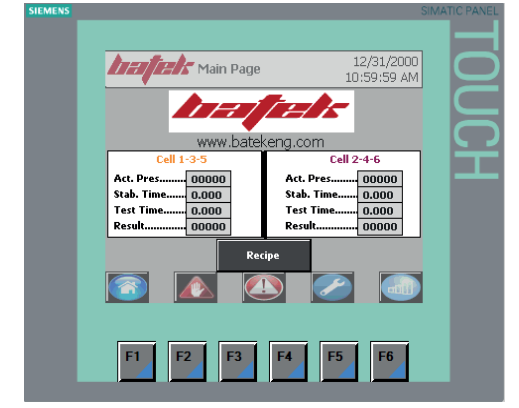
Individual pressure filling for each cell, electronic pressure regulation which automatically switches process pressure values. The system ensures pressure control based filling cycle which result in quick cycle time.

04



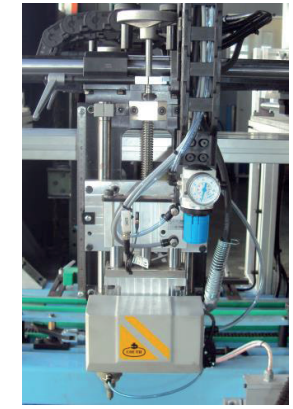
Dedicated tests available for particular lid designs. Kamina test head design mechanically blows all testing seals to tightly seal horizontal vent holes. Easy and quick fit testing head design remarkably facilitates changeover procedure. The machine is supplied with one set of testing head and relevant quick changeover template.

05



HMI for user friendly operation. Settings, manual buttons, basic production figures, recipe building, alarm & diagnostic are provided at HMI.

06



The machine is supplied with an alphanumeric dot matrix code marking unit. The unit can be provided for top or side marking. Easy and quick setup features are integrated in the unit.

### AVAILABLE OPTIONS

- \* Mitsubishi PLC and HMI.
- \* Laser code marking system
- \* Spare part set

## TECHNICAL DATA

Electric: 220/380V - 3P -50Hz (or as required)  
Power: 2 KwA  
Compressed Air: 2 cbm/h @ 6Bar (87 psi)  
Operator: None permanent  
PLC: Siemens S7  
HMI: Siemens  
Pneumatics: Festo / SMC  
AC Motors: SEW Eurodrive  
Pressure Sensor: Sick  
Control Voltage: 24V DC

Testing Pressure: Adjustable up to 0,1MPa  
Pressure Filling: Pressure control based  
Rapid Filling Function: Available  
Resolution: 1 mbar  
Max. Capacity: 5 batteries/min.  
Networking: Available  
Remote Access: Available  
Standard Weight: 1600 Kgs  
Crate Dimensions: 120Wx380Lx220H cm